

**Product Code:
HSC**

Description:

Compression glands are used as a simple mounting arrangement for a single temperature probe or other element. They allow the element to be quickly mounted to process plant and pipelines whilst ensuring that the correct insertion length is made.

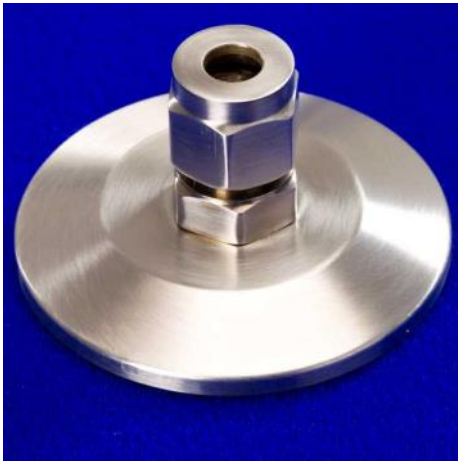
They are supplied in 316 stainless steel for use in aggressive or hygienic environments.

A wide range of glands are available to suit element sizes in both metric and Imperial, from 1mm to 1" in diameter.

Available tri-clover flanges are shown below.

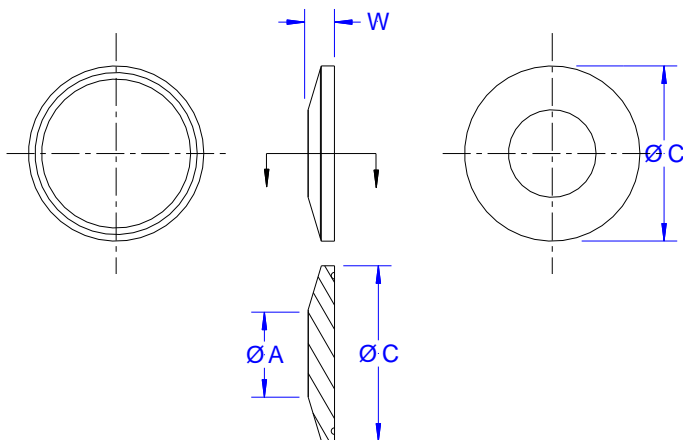
All glands are supplied with 316 stainless steel olives as standard, however these can be replaced with Teflon® olives which do not leave a mark on the sealed element.

For sealing multiple elements in one gland, or for high pressure sealing, please see our range of [Conax sealing glands](#).



Specification:

PRODUCT CODE	HSC-300 ⁽¹⁾ -SO ⁽²⁾ -2" ⁽³⁾ -SS ⁽⁴⁾
⁽¹⁾ ELEMENT SIZE	mm * 100
⁽²⁾ OLIVE TYPE	SO - 316 Stainless Steel TO - Teflon®
⁽³⁾ PROCESS CONNECTION	Tri-clover Size (1 to 1.5", 2.0", ".5", 3.0")
⁽⁴⁾ BODY MATERIAL	SS 316 Stainless Steel



Nominal Size		Dimensions (mm)			Mass (Kg)
Imperial	Metric	Face Ø A	Flange Ø C	Width W	
1" - 1½"	25	24.5	50.5	7.0	0.08
2"	50	39.0	64.0	7.0	0.14
2½"	n/a	53.5	77.5	7.0	0.21
3"	65	66.5	91.0	7.0	0.30

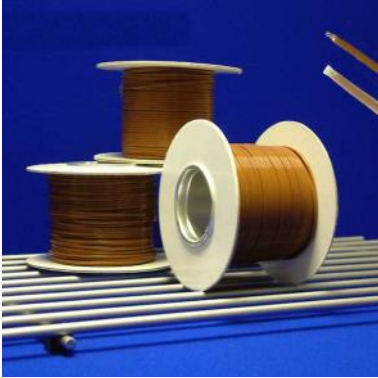
Datasheet : 404

Thermal Detection Limited
Unit 6, Primrose Hill Industrial Estate
Orde Wingate Way
Stockton-on-Tees, England,
TS19 0GA

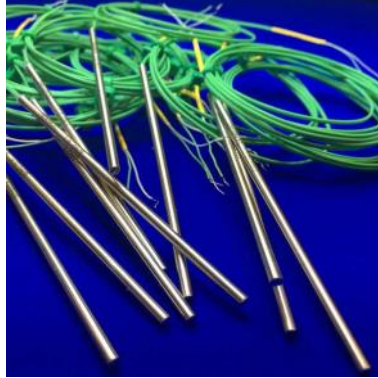


Fax : +44 (0) 1642 618307
Tel : +44 (0) 1642 602878
Email: sales@thermal-detection.com
Web: www.thermal-detection.com
© Thermal Detection Ltd 2016

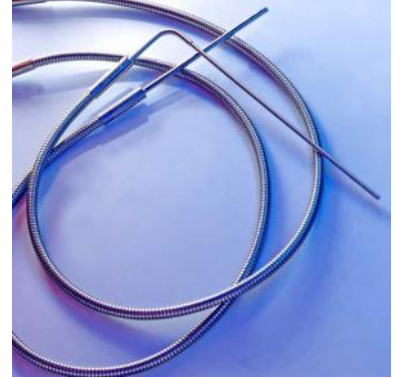
Validation Accessories:



Type T Thermocouple Wire



SD050 Drain Probe



Steriprobe® Autoclave Probe



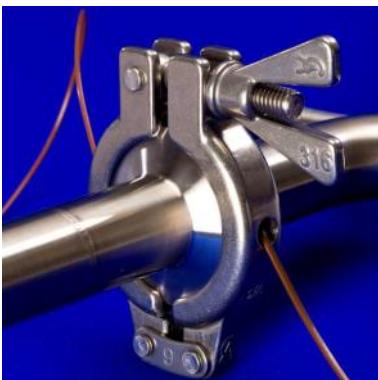
Y Piece Extension



Tee Piece Extension



Clamps, Tri-clover blanks,
gaskets



Smart Clamp



Bottle Cap Gland



Ampoule Holders

Datasheet : 404