

Product Code:
PTA

Description:

Thermal Detection offers a range of sanitary / hygienic tri-clover adaptors manufactured for use in the Pharmaceutical, Food & Dairy industries.

Manufactured from 316 stainless steel.

Available in highly polished finish.

Material certificates available on request.



Specification:

| | |
|------------------------|---|
| MATERIAL | 316 Stainless steel |
| IMPERIAL FLANGE | Flange: 0.5-0.75", 1-1.5", 2" Male thread 1/8", 1/4", 3/8", 1/2", 3/4" & 1"BSPT |
| METRIC FLANGE | Flange: DN10, DN15 & DN20 Male thread: 1/4", 3/8", 1/2" & 3/4" BSPT |
| OPTIONS | Female thread sizes also available as above NPT versions for certain sizes Custom made also available |

Datasheet : 403

Thermal Detection Limited
Unit 6, Primrose Hill Industrial Estate
Orde Wingate Way
Stockton-on-Tees, England,
TS19 0GA



Fax : +44 (0) 1642 618307
Tel : +44 (0) 1642 602878
Email: sales@thermal-detection.com
Web: www.thermal-detection.com
© Thermal Detection Ltd 2016

Validation Accessories:



Pre-cut Validation Thermocouples



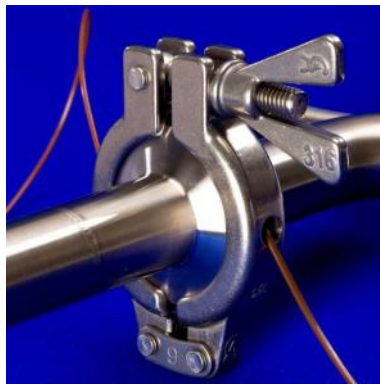
Validation Thermocouple Looms



GL45 Bottle Cap Gland for Thermocouple



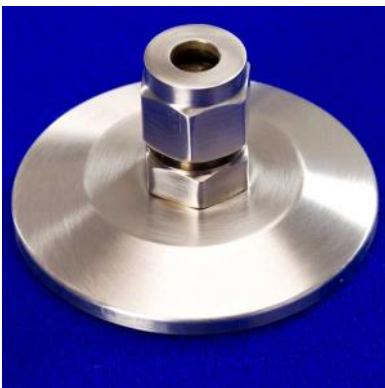
Thermocouple Entry Gland TCEG



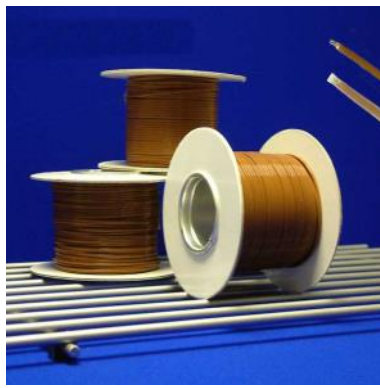
Validation Clamp



Tee Piece Extension



Hygienic Compression Fitting



Type T thermocouple Wire



Clamps and Tri-clover Gaskets

Datasheet : 403