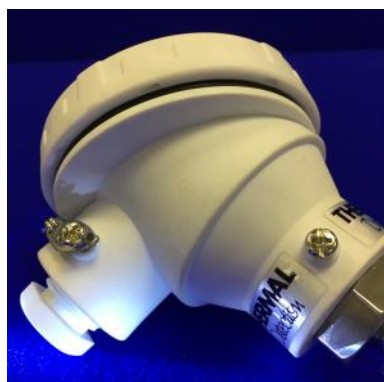


A convenient arrangement of a pocket and separate temperature insert, for Food, Dairy and Pharmaceutical processes and service plant

- Spring loaded insert specified with either PT100, PT1000 or thermocouple type T sensors.
- Inserts can be purchased separately.
- Terminal head in FDA Polypropylene or 316 stainless steel
- Wide range of process connection options.
- Can be specified with a 4-20mA transmitter



Specification:

| | |
|---|---|
| THERMOWELL MATERIAL | 316 stainless steel. |
| THERMOWELL DIMENSIONS | Diameter : Metric: 6.0mm to 15mm Imperial: ¼" to ½" NB (21.3mm) Length: 50mm to as required |
| PROCESS CONNECTION | MDP: plain sheath MDS: Screwed BSPT/BSPP/NPT/Metric any size. MDF: Flanged, any size |
| REMOVABLE SPRING LOADED INSERT WITH RTD SENSOR | PT100 / PT1000 Single or duplex with 2, 3 or 4 wire connection. Triplex with 2 wire connection Tolerance: PT100: Class A, AA to BS EN 60751:2008 or 1/10 DIN PT1000: Class A Temperature Range: -50 to +250°C |
| REMOVABLE SPRING LOADED INSERT WITH THERMOCOUPLE SENSOR | Single, duplex or triplex elements Type: T to BS EN 60584-1:2013. Temperature Range: -50 to +250°C |
| TERMINAL HEAD | Screw cap, retention chain and M20 cable entry, environmental rating to IP67. In FDA approved Polypropylene or 316 stainless steel Complete with terminal block or transmitter |
| OPTIONAL EXTRAS | |
| <ul style="list-style-type: none"> • Transmitter for 4-20mA output to suit RTD or Thermocouple • PR 5332 recommended for high accuracy PT100/PT1000 measurements for detectors with 4 wires • Material certs for wetted parts • UKAS calibration • ADIF statement • 0.8 RA surface finish on wetted parts • Electropolishing for superior surface finish | |

Datasheet : 050

Please download PDF and fill in the boxes. Use 'Additional Information' for non standard requests. Return form to sales@thermal-detection.com or fax to +44 1642 618307

Name: _____ Email: _____
 Organisation: _____ Tel: _____
 Country _____

Section 1 - unit dimensions in mm, select options required Terminal Head Material

Pocket Diameter _____ Pocket immersion Length in mm (if screw or flanged connection specified, this is the length below screw or flange) _____

| | | | | | | | | | | | | |
|--|---|---|-------|----------------|------------------|--------------|-----------|--------|------------|--------|----------|--------|
| <p>Section 2 - Insert Sensor Configuration</p> <p>Sensor Number</p> <p>Single Duplex Triplex</p> | <p>Thermocouple Type T</p> <p>Hot Junction</p> <p>G Grounded s Insulated</p> | <table style="width: 100%; border-collapse: collapse;"> <tr> <td style="width: 50%;">PT100</td> <td style="width: 50%;">PT1000 Class A</td> </tr> <tr> <td>Tolerance</td> <td>Wires</td> </tr> <tr> <td>Class 'A'</td> <td>2 wire</td> </tr> <tr> <td>Class 'AA'</td> <td>3 wire</td> </tr> <tr> <td>1/10 DIN</td> <td>4 wire</td> </tr> </table> | PT100 | PT1000 Class A | Tolerance | Wires | Class 'A' | 2 wire | Class 'AA' | 3 wire | 1/10 DIN | 4 wire |
| PT100 | PT1000 Class A | | | | | | | | | | | |
| Tolerance | Wires | | | | | | | | | | | |
| Class 'A' | 2 wire | | | | | | | | | | | |
| Class 'AA' | 3 wire | | | | | | | | | | | |
| 1/10 DIN | 4 wire | | | | | | | | | | | |

| | | |
|---|--|--|
| <p>Section 3 Process Connections</p> <p>None</p> <p>Fixed Thread → +</p> <p>Adjustable Compression Fitting</p> <p>Flange (specify) _____</p> | <p>Termination Options</p> <p>DIN plate</p> <p>Ceramic Block </p> <p>Transmitter - In Head </p> <p>Transmitter - DIN rail </p> <p>Transmitter Range Min/Max °C /</p> | <p>Optional Extras</p> <p>3.1 Material Certs for wetted parts</p> <p>ADIF Statement</p> <p><0.8RA Surface Finish</p> <p>Electropolishing</p> <p>UKAS Calibration</p> <p>indicate temperature points</p> |
|---|--|--|

| | |
|---|-------------------------------|
| <p>Section 4 - Application Details</p> <p>Number of probes required _____</p> <p>Industry Type _____</p> | <p>Additional information</p> |
|---|-------------------------------|