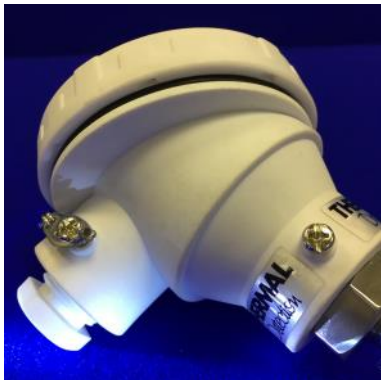


A cost effective temperature probe for Food, Dairy and Pharmaceutical processes

- Consists of a plain stem probe with an FDA Polypropylene or 316 stainless steel terminal head
- Specified as either an RTD (PT100 or PT1000) or type T thermocouple.
- Plain stem or screw and flange process connection
- Can be specified with a 4-20mA transmitter



Specification:	
STEM MATERIAL	Plain sheath in 316 stainless steel.
STEM DIMENSIONS	Diameter : Metric: 3.0mm to 15mm Imperial: 1/8", 3/16", 1/4", 3/8", 1/2" Length: 50mm min to as required
RTD SENSOR	PT100 / PT1000 Single or duplex with 2, 3 or 4 wire connection. Triplex with 2 wire connection Tolerance: PT100: Class A, AA to BS EN 60751:2008 or 1/10 DIN PT1000: Class A Temperature Range: -50 to +250°C
THERMOCOUPLE SENSOR	Single, duplex or triplex elements Type: T to BS EN 60584-1:2013. Temperature Range: -50 to +250°C
TERMINAL HEAD	Screw cap, retention chain and M20 cable entry, environmental rating to IP67. In FDA approved Polypropylene or 316 stainless steel Complete with terminal block or transmitter
PROCESS CONNECTIONS	LDP - plain LDPS - screwed BSPT/BSPP, NPT, Metric. Welded or adjustable compression fitting LDPF - flanged, any size
OPTIONAL EXTRAS	
<ul style="list-style-type: none"> • Transmitter for 4-20mA output to suit RTD or Thermocouple • PR 5332 recommended for high accuracy PT100/PT1000 measurements for detectors with 4 wires • Material certs for wetted parts • UKAS calibration • ADIF statement • 0.8 RA surface finish on wetted parts • Electropolishing for superior surface finish 	


Datasheet : 048

Please download PDF and fill in the boxes. Use 'Additional Information' for non standard requests. Return form to sales@thermal-detection.com or fax to +44 1642 618307




Name: _____ Email: _____
 Organisation: _____ Tel: _____
 Country _____

Section 1 - unit dimensions in mm, select options required Terminal Head Material

Probe Diameter _____ Probe Immersion Length in mm _____
 (if threaded or flanged connection, indicate immersion below thread or flange)



Sensor Number	Thermocouple Only		PT100	PT1000 Class A
	Hot Junction	Type	Type	Wires
Single	G Grounded	Type 'T'	Class 'A'	2 wire
Duplex	s Insulated		Class 'AA'	3 wire
Triplex			1/10 DIN	4 wire

Section 3 Process Connections	Termination Options	Optional Extras
None Fixed Thread → + Adjustable Compression Fitting Flange (specify) _____	DIN plate Ceramic Block  Transmitter - In Head  Transmitter - DIN rail  Transmitter Range Min/Max °C _____	3.1 Material Certs for wetted parts ADIF Statement <0.8RA Surface Finish Electropolishing UKAS Calibration indicate temperature points

Section 4 - Application Details Additional information

Number of probes required _____

Industry Type _____