

### Product Code: MSC

### Description:

Compression glands are used as a simple mounting arrangement for a single temperature probe or other element. They allow the element to be quickly mounted to process plant and pipelines whilst ensuring that the correct insertion length is made.

They are supplied in 316 stainless steel for use in aggressive or hygienic environments.

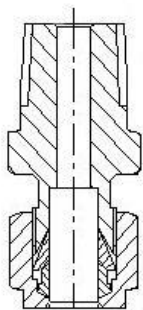
A wide range of glands are available to suit element sizes in both metric and Imperial, from 1mm to 1" in diameter.

Available thread types include BSPP, BSPT, NPT and Metric.

All glands are supplied with 316 stainless steel double ferrule olives as standard, however these can be replaced with Teflon® single piece olives which do not leave a mark on the sealed element.

For sealing multiple elements in one gland, or for high pressure sealing, please see our range of [Conax sealing glands](#).

The following pages show the full range of glands available.

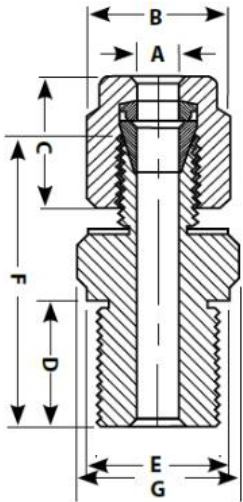


Specification:	
PRODUCT CODE	MSC-300 <sup>(1)</sup> -SO <sup>(2)</sup> -1/8" BSPT <sup>(3)</sup> -SS <sup>(4)</sup>
<sup>(1)</sup> ELEMENT SIZE	mm * 100
<sup>(2)</sup> OLIVE TYPE	SO - 316 Stainless Steel TO - Teflon®
<sup>(3)</sup> PROCESS CONNECTION	SIZE + THREAD
<sup>(4)</sup> BODY MATERIAL	SS 316 Stainless Steel

### Datasheet : 028

### BSPP THREADS

1/8" BSPP	A	B	C	D	E	F	G
Product Code	To Suit	Nut A/F					
MSC-100-SO-1/8"BSPP-SS	1.0mm	7.9	8.0	7.1	13.8	22.0	14.2
MSC-150-SO-1/8"BSPP-SS	1.5mm	7.9	8.0	7.1	13.8	22.0	14.2
MSC-200-SO-1/8"BSPP-SS	2.0mm	7.9	8.0	7.1	13.8	22.0	14.2
MSC-300-SO-1/8"BSPP-SS	3.0mm	11.1	12.0	7.1	13.8	23.7	14.2
MSC-320-SO-1/8"BSPP-SS	1/8"	11.1	12.0	7.1	13.8	23.2	14.2
MSC-400-SO-1/8"BSPP-SS	4.0mm	12.7	12.0	7.1	13.8	24.6	14.2
MSC-450-SO-1/8"BSPP-SS	4.5mm	12.7	12.0	7.1	13.8	24.6	14.2
MSC-476-SO-1/8"BSPP-SS	3/16"	12.7	12.0	7.1	13.8	24.1	14.2
MSC-600-SO-1/8"BSPP-SS	6.0mm	14.2	12.7	7.1	13.8	25.1	14.2
MSC-635-SO-1/8"BSPP-SS	1/4"	14.2	12.7	7.1	13.8	25.7	14.2
MSC-800-SO-1/8"BSPP-SS	8mm	15.8	13.5	7.1	13.8	26.3	14.2



1/4" BSPP	A	B	C	D	E	F	G
Product Code	To Suit	Nut A/F					
MSC-150-SO-1/4"BSPP-SS	1.5mm	7.9	8.0	11.2	18.2	26.7	19.1
MSC-200-SO-1/4"BSPP-SS	2mm	7.9	8.0	11.2	18.2	26.7	19.1
MSC-300-SO-1/4"BSPP-SS	3mm	11.1	12.0	11.2	18.2	28.6	19.1
MSC-320-SO-1/4"BSPP-SS	1/8"	11.1	12.0	11.2	18.2	28.1	19.1
MSC-400-SO-1/4"BSPP-SS	4mm	12.7	12.0	11.2	18.2	29.5	19.1
MSC-450-SO-1/4"BSPP-SS	4.5mm	12.7	12.0	11.2	18.2	29.5	19.1
MSC-476-SO-1/4"BSPP-SS	3/16"	12.7	12.0	11.2	18.2	29.0	19.1
MSC-550-SO-1/4"BSPP-SS	5.5mm	14.2	12.7	11.2	18.2	30.0	19.1
MSC-600-SO-1/4"BSPP-SS	6mm	14.2	12.7	11.2	18.2	30.5	19.1
MSC-635-SO-1/4"BSPP-SS	1/4"	14.2	12.7	11.2	18.2	30.0	19.1
MSC-800-SO-1/4"BSPP-SS	8mm	15.8	13.5	11.2	18.2	31.2	19.1

3/8" BSPP	A	B	C	D	E	F	G
Product Code	To Suit	Nut A/F					
MSC-300-SO-3/8"BSPP-SS	3mm	11.1	12.0	11.1	21.7	29.5	22.2
MSC-400-SO-3/8"BSPP-SS	4mm	12.7	12.0	11.1	21.7	30.4	22.2
MSC-450-SO-3/8"BSPP-SS	4.5mm	12.7	12.0	11.1	21.7	30.4	22.2
MSC-476-SO-3/8"BSPP-SS	3/16"	12.7	12.0	11.1	21.7	30.4	22.2
MSC-550-SO-3/8"BSPP-SS	5.5mm	14.2	12.7	11.1	21.7	31.4	22.2
MSC-600-SO-3/8"BSPP-SS	6mm	14.2	12.7	11.1	21.7	31.4	22.2
MSC-635-SO-3/8"BSPP-SS	1/4"	14.2	12.7	11.2	21.4	31.2	22.2
MSC-800-SO-3/8"BSPP-SS	8mm	15.8	13.5	11.1	21.7	32.1	22.2
MSC-950-SO-3/8"BSPP-SS	3/8"	17.5	14.2	11.2	21.4	32.2	22.2
MSC-1270-SO-3/8"BSPP-SS	1/2"	22.2	17.5	11.2	21.4	32.4	22.2

Sizes in mm and are correct at time of publication but subject to change.

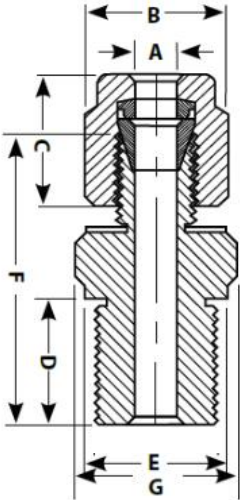
Thermal Detection Limited  
Unit 6, Primrose Hill Industrial Estate  
Orde Wingate Way  
Stockton-on-Tees, England,  
TS19 0GA



Fax : +44 (0) 1642 618307  
Tel : +44 (0) 1642 602878  
Email: [sales@thermal-detection.com](mailto:sales@thermal-detection.com)  
Web: [www.thermal-detection.com](http://www.thermal-detection.com)  
© Thermal Detection Ltd 2016

## BSPP THREADS

1/2" BSPP	A	B	C	D	E	F	G
Product Code	To Suit	Nut A/F					
MSC-300-SO-1/2"BSPP-SS	3mm	11.1	12.0	14.2	25.8	35.6	27.0
MSC-320-SO-1/2"BSPP-SS	1/8"	11.1	12.0	14.2	25.8	35.6	27.0
MSC-400-SO-1/2"BSPP-SS	4mm	12.7	12.0	14.2	25.8	36.5	27.0
MSC-450-SO-1/2"BSPP-SS	4.5mm	12.7	12.0	14.2	25.8	36.5	27.0
MSC-476-SO-1/2"BSPP-SS	3/16"	12.7	12.0	14.2	25.8	36.5	27.0
MSC-550-SO-1/2"BSPP-SS	5.5mm	14.2	12.7	14.2	25.8	37.5	27.0
MSC-600-SO-1/2"BSPP-SS	6mm	14.2	12.7	14.2	25.8	37.5	27.0
MSC-635-SO-1/2"BSPP-SS	1/4"	14.2	12.7	14.2	25.8	37.5	27.0
MSC-800-SO-1/2"BSPP-SS	8mm	15.8	13.5	14.2	25.8	38.2	27.0
MSC-900-SO-1/2"BSPP-SS	9mm	17.5	14.2	14.2	25.8	38.7	27.0
MSC-950-SO-1/2"BSPP-SS	3/8"	17.5	14.2	14.2	25.8	38.7	27.0
MSC-1000-SO-1/2"BSPP-SS	10mm	17.5	14.2	14.2	25.8	39.5	27.0
MSC-1100-SO-1/2"BSPP-SS	11mm	22.2	17.5	14.2	25.8	39.5	27.0
MSC-1200-SO-1/2"BSPP-SS	12mm	22.2	17.5	14.2	25.8	39.5	27.0
MSC-1270-SO-1/2"BSPP-SS	1/2"	22.2	17.5	14.2	25.8	38.9	27.0
MSC-1400-SO-1/2"BSPP-SS	14mm	25.4	17.5	14.2	25.8	38.8	27.0
MSC-1500-SO-1/2"BSPP-SS	15mm	25.4	17.5	14.2	25.8	38.8	27.0
3/4" BSPP	A	B	C	D	E	F	G
Product Code	To Suit	Nut A/F					
MSC-600-SO-3/4"BSPP-SS	6mm	14.2	12.7	16.0	31.0	41.5	31.8
MSC-635-SO-3/4"BSPP-SS	1/4"	14.2	12.7	16.0	31.0	41.5	31.8
MSC-800-SO-3/4"BSPP-SS	8mm	15.8	13.5	16.0	31.0	42.2	31.8
MSC-950-SO-3/4"BSPP-SS	3/8"	17.5	14.2	16.0	31.0	42.2	31.8
MSC-1200-SO-3/4"BSPP-SS	12mm	22.2	17.5	16.0	31.0	42.7	31.8
MSC-1270-SO-3/4"BSPP-SS	1/2"	22.2	17.5	16.0	31.0	42.2	31.8
MSC-1500-SO-3/4"BSPP-SS	15mm	25.4	17.5	16.0	31.0	42.7	31.8
MSC-1900-SO-3/4"BSPP-SS	3/4"	28.5	17.5	16.0	31.0	42.5	31.8
1" BSPP	A	B	C	D	E	F	G
Product Code	To Suit	Nut A/F					
MSC-600-SO-3/4"BSPP-SS	6mm	14.2	12.7	18.2	40.5	42.7	41.3
MSC-635-SO-3/4"BSPP-SS	1/4"	14.2	12.7	18.2	40.5	42.2	41.3
MSC-800-SO-3/4"BSPP-SS	8mm	15.8	13.5	18.2	40.5	43.4	41.3
MSC-1200-SO-3/4"BSPP-SS	12mm	22.2	17.5	18.2	40.5	43.9	41.3
MSC-1270-SO-3/4"BSPP-SS	1/2"	22.2	17.5	18.2	40.5	43.4	41.3
MSC-1500-SO-3/4"BSPP-SS	15mm	25.4	17.5	18.2	40.5	43.9	41.3
MSC-1750-SO-3/4"BSPP-SS	17.5mm	25.4	17.5	18.2	40.5	43.9	41.3
MSC-1900-SO-3/4"BSPP-SS	3/4"	28.5	17.5	18.2	40.5	43.7	41.3
MSC-2540-SO-3/4"BSPP-SS	1"	38.1	20.5	18.2	40.5	47.8	41.3



Sizes in mm and are correct at time of publication but subject to change.

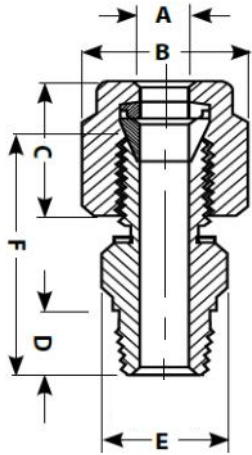
Thermal Detection Limited  
Unit 6, Primrose Hill Industrial Estate  
Orde Wingate Way  
Stockton-on-Tees, England,  
TS19 0GA



Fax : +44 (0) 1642 618307  
Tel : +44 (0) 1642 602878  
Email: [sales@thermal-detection.com](mailto:sales@thermal-detection.com)  
Web: [www.thermal-detection.com](http://www.thermal-detection.com)  
© Thermal Detection Ltd 2016

### BSPT THREADS

1/8" BSPT	A	B	C	D	E	F
Product Code	To Suit	Nut A/F				
MSC-100-SO-1/8"BSPT-SS	1mm	7.9	8.0	9.6	11.1	22.1
MSC-150-SO-1/8"BSPT-SS	1.5mm	7.9	8.0	9.6	11.1	22.1
MSC-200-SO-1/8"BSPT-SS	2.0mm	7.9	8.0	9.6	11.1	22.1
MSC-160-SO-1/8"BSPT-SS	1/16"	7.9	8.0	9.6	11.1	22.1
MSC-300-SO-1/8"BSPT-SS	3mm	11.1	12.0	9.6	11.1	23.8
MSC-320-SO-1/8"BSPT-SS	1/8"	11.1	12.0	9.6	11.1	23.8
MSC-400-SO-1/8"BSPT-SS	4mm	12.7	12.0	9.6	11.1	24.9
MSC-450-SO-1/8"BSPT-SS	4.5mm	12.7	12.0	9.6	11.1	24.9
MSC-476-SO-1/8"BSPT-SS	3/16"	11.1	12.0	9.6	11.1	24.9
MSC-600-SO-1/8"BSPT-SS	6mm	14.2	12.7	9.6	11.1	25.4
MSC-635-SO-1/8"BSPT-SS	1/4"	14.2	12.7	9.6	11.1	25.4



1/4" BSPT	A	B	C	D	E	F
Product Code	To Suit	Nut A/F				
MSC-150-SO-1/4"BSPT-SS	1.5mm	8.0	8.0	14.2	14.2	27.3
MSC-200-SO-1/4"BSPT-SS	2.0mm	8.0	8.0	14.2	14.2	27.3
MSC-300-SO-1/4"BSPT-SS	3mm	11.1	12.0	14.2	14.2	28.9
MSC-320-SO-1/4"BSPT-SS	1/8"	11.1	12.0	14.2	14.2	28.9
MSC-400-SO-1/4"BSPT-SS	4mm	12.7	12.0	14.2	14.2	29.5
MSC-450-SO-1/4"BSPT-SS	4.5mm	12.7	12.0	14.2	14.2	29.5
MSC-476-SO-1/4"BSPT-SS	3/16"	12.7	12.0	14.2	14.2	29.5
MSC-600-SO-1/4"BSPT-SS	6mm	14.3	12.7	14.2	14.2	30.7
MSC-635-SO-1/4"BSPT-SS	1/4"	14.2	12.7	14.2	14.2	30.7
MSC-800-SO-1/4"BSPT-SS	8mm	15.8	13.5	14.2	14.2	31.2

3/8" BSPT	A	B	C	D	E	F
Product Code	To Suit	Nut A/F				
MSC-300-SO-3/8"BSPT-SS	3mm	11.1	12.0	14.2	17.5	29.5
MSC-320-SO-3/8"BSPT-SS	1/8"	11.1	12.0	14.2	17.5	29.5
MSC-400-SO-3/8"BSPT-SS	4mm	12.7	12.0	14.2	17.5	30.5
MSC-450-SO-3/8"BSPT-SS	4.5mm	12.7	12.0	14.2	17.5	30.5
MSC-476-SO-3/8"BSPT-SS	3/16"	12.7	12.0	14.2	17.5	30.5
MSC-600-SO-3/8"BSPT-SS	6mm	14.3	12.7	14.2	17.5	31.0
MSC-635-SO-3/8"BSPT-SS	1/4"	14.3	12.7	14.2	17.5	31.0
MSC-800-SO-3/8"BSPT-SS	8mm	15.9	13.5	14.2	17.5	32.2

Sizes in mm and are correct at time of publication but subject to change.

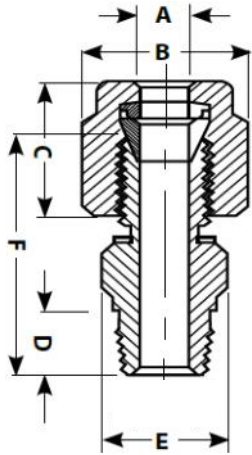
Thermal Detection Limited  
Unit 6, Primrose Hill Industrial Estate  
Orde Wingate Way  
Stockton-on-Tees, England,  
TS19 0GA



Fax : +44 (0) 1642 618307  
Tel : +44 (0) 1642 602878  
Email: [sales@thermal-detection.com](mailto:sales@thermal-detection.com)  
Web: [www.thermal-detection.com](http://www.thermal-detection.com)  
© Thermal Detection Ltd 2016

## BSPT THREADS

1/2" BSPT	A	B	C	D	E	F
Product Code	To Suit	Nut A/F				
MSC-300-SO-1/2"BSPT-SS	3mm	11.1	12.0	19.0	22.2	35.5
MSC-320-SO-1/2"BSPT-SS	1/8"	11.1	12.0	19.0	22.2	35.5
MSC-400-SO-1/2"BSPT-SS	4mm	12.7	12.0	19.0	22.2	36.5
MSC-450-SO-1/2"BSPT-SS	4.5mm	12.7	12.0	19.0	22.2	36.5
MSC-476-SO-1/2"BSPT-SS	3/16"	12.7	12.0	19.0	22.2	36.5
MSC-600-SO-1/2"BSPT-SS	6mm	14.2	12.7	19.0	22.2	37.3
MSC-635-SO-1/2"BSPT-SS	1/4"	14.2	12.7	19.0	22.2	37.3
MSC-800-SO-1/2"BSPT-SS	8mm	15.8	13.5	19.0	22.2	38.2
MSC-950-SO-1/2"BSPT-SS	3/8"	17.5	14.2	19.0	22.2	38.7
MSC-1000-SO-1/2"BSPT-SS	10mm	17.5	14.2	19.0	22.2	38.7
MSC-1200-SO-1/2"BSPT-SS	12mm	22.2	17.5	19.0	22.2	38.7
MSC-1270-SO-1/2"BSPT-SS	1/2"	22.2	17.5	19.0	22.2	38.7
MSC-1500-SO-1/2"BSPT-SS	15mm	25.4	17.5	19.0	22.2	38.7



3/4" BSPT	A	B	C	D	E	F
Product Code	To Suit	Nut A/F				
MSC-600-SO-3/4"BSPT-SS	6mm	14.2	12.7	19.0	27.0	38.6
MSC-635-SO-3/4"BSPT-SS	1/4"	14.2	12.7	19.0	27.0	38.6
MSC-800-SO-3/4"BSPT-SS	8mm	15.8	13.5	19.0	27.0	39.8
MSC-1100-SO-3/4"BSPT-SS	11mm	22.2	17.5	19.0	27.0	40.3
MSC-1200-SO-3/4"BSPT-SS	12mm	22.2	17.5	19.0	27.0	40.3
MSC-1270-SO-3/4"BSPT-SS	1/2"	22.2	17.5	19.0	27.0	40.3
MSC-1500-SO-3/4"BSPT-SS	15mm	25.4	17.5	19.0	27.0	40.3
MSC-2450-SO-3/4"BSPT-SS	1"	38.1	20.5	19.0	27.0	42.2

1" BSPT	A	B	C	D	E	F
Product Code	To Suit	Nut A/F				
MSC-600-SO-1"BSPT-SS	6mm	14.2	12.7	23.5	34.9	42.0
MSC-635-SO-1"BSPT-SS	1/4"	14.2	12.7	23.5	34.9	42.0
MSC-2450-SO-1"BSPT-SS	1"	38.1	20.5	23.5	34.9	46.7

Sizes in mm and are correct at time of publication but subject to change.

Thermal Detection Limited  
Unit 6, Primrose Hill Industrial Estate  
Orde Wingate Way  
Stockton-on-Tees, England,  
TS19 0GA

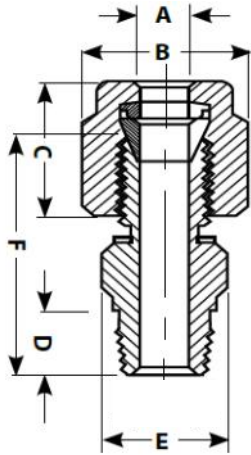


Fax : +44 (0) 1642 618307  
Tel : +44 (0) 1642 602878  
Email: [sales@thermal-detection.com](mailto:sales@thermal-detection.com)  
Web: [www.thermal-detection.com](http://www.thermal-detection.com)  
© Thermal Detection Ltd 2016



### NPT THREADS

1/8" NPT	A	B	C	D	E	F
Product Code	To Suit	Nut A/F				
MSC-100-SO-1/8"NPT-SS	1mm	7.9	8.0	9.6	11.1	22.1
MSC-150-SO-1/8"NPT-SS	1.5mm	7.9	8.0	9.6	11.1	22.1
MSC-200-SO-1/8"NPT-SS	2mm	7.9	8.0	9.6	11.1	22.1
MSC-160-SO-1/8"NPT-SS	1/16"	7.9	8.0	9.6	11.1	22.1
MSC-300-SO-1/8"NPT-SS	3mm	11.1	12.0	9.6	11.1	23.8
MSC-320-SO-1/8"NPT-SS	1/8"	11.1	12.0	9.6	11.1	23.8
MSC-400-SO-1/8"NPT-SS	4mm	12.7	12.0	9.6	11.1	24.9
MSC-450-SO-1/8"NPT-SS	4.5mm	12.7	12.0	9.6	11.1	24.9
MSC-476-SO-1/8"NPT-SS	3/16"	12.7	12.0	9.6	11.1	24.9
MSC-600-SO-1/8"NPT-SS	6mm	14.2	12.7	9.6	11.1	25.4
MSC-635-SO-1/8"NPT-SS	1/4"	14.2	12.7	9.6	11.1	25.4



1/4" NPT	A	B	C	D	E	F
Product Code	To Suit	Nut A/F				
MSC-150-SO-1/4"NPT-SS	1.5mm	8.0	8.0	14.2	14.2	28.0
MSC-200-SO-1/4"NPT-SS	2mm	8.0	8.0	14.2	14.2	28.0
MSC-300-SO-1/4"NPT-SS	3mm	11.1	12.0	14.2	14.2	28.9
MSC-320-SO-1/4"NPT-SS	1/8"	11.1	12.0	14.2	14.2	28.9
MSC-400-SO-1/4"NPT-SS	4mm	12.7	12.0	14.2	14.2	29.5
MSC-450-SO-1/4"NPT-SS	4.5mm	12.7	12.0	14.2	14.2	29.5
MSC-500-SO-1/4"NPT-SS	5mm	12.7	12.0	14.2	14.2	29.5
MSC-476-SO-1/4"NPT-SS	3/16"	12.7	12.0	14.2	14.2	29.5
MSC-600-SO-1/4"NPT-SS	6mm	14.2	12.7	14.2	14.2	30.7
MSC-635-SO-1/4"NPT-SS	1/4"	14.2	12.7	14.2	14.2	30.7
MSC-800-SO-1/4"NPT-SS	8mm	15.8	13.5	14.2	14.2	31.2

3/8" NPT	A	B	C	D	E	F
Product Code	To Suit	Nut A/F				
MSC-300-SO-3/8"NPT-SS	3mm	11.1	12.0	14.2	17.5	29.5
MSC-320-SO-3/8"NPT-SS	1/8"	11.1	12.0	14.2	17.5	29.5
MSC-400-SO-3/8"NPT-SS	4mm	12.7	12.0	14.2	17.5	30.5
MSC-450-SO-3/8"NPT-SS	4.5mm	12.7	12.0	14.2	17.5	30.5
MSC-476-SO-3/8"NPT-SS	3/16"	12.7	12.0	14.2	17.5	30.5
MSC-600-SO-3/8"NPT-SS	6mm	14.2	12.7	14.2	17.5	31.0
MSC-635-SO-3/8"NPT-SS	1/4"	14.2	12.7	14.2	17.5	31.0
MSC-800-SO-3/8"NPT-SS	8mm	15.8	13.5	14.2	17.5	32.2

Sizes in mm and are correct at time of publication but subject to change.

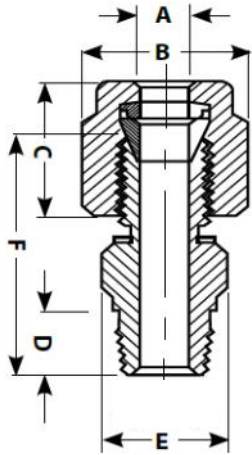
Thermal Detection Limited  
Unit 6, Primrose Hill Industrial Estate  
Orde Wingate Way  
Stockton-on-Tees, England,  
TS19 0GA



Fax : +44 (0) 1642 618307  
Tel : +44 (0) 1642 602878  
Email: [sales@thermal-detection.com](mailto:sales@thermal-detection.com)  
Web: [www.thermal-detection.com](http://www.thermal-detection.com)  
© Thermal Detection Ltd 2016

### NPT THREADS

1/2" NPT	A	B	C	D	E	F
Product Code	To Suit	Nut A/F				
MSC-300-SO-1/2"NPT-SS	3mm	11.1	12.0	19.0	22.2	35.5
MSC-320-SO-1/2"NPT-SS	1/8"	11.1	12.0	19.0	22.2	35.5
MSC-400-SO-1/2"NPT-SS	4mm	12.7	12.0	19.0	22.2	36.5
MSC-450-SO-1/2"NPT-SS	4.5mm	12.7	12.0	19.0	22.2	36.5
MSC-476-SO-1/2"NPT-SS	3/16"	12.7	12.0	19.0	22.2	36.5
MSC-600-SO-1/2"NPT-SS	6mm	14.2	12.7	19.0	22.2	37.3
MSC-635-SO-1/2"NPT-SS	1/4"	14.2	12.7	19.0	22.2	37.3
MSC-800-SO-1/2"NPT-SS	8mm	15.8	13.5	19.0	22.2	38.2
MSC-950-SO-1/2"NPT-SS	3/8"	17.5	14.2	19.0	22.2	38.7
MSC-1000-SO-1/2"NPT-SS	10mm	17.5	14.2	19.0	22.2	38.7
MSC-1200-SO-1/2"NPT-SS	12mm	22.2	17.5	19.0	22.2	38.7
MSC-1270-SO-1/2"NPT-SS	1/2"	22.2	17.5	19.0	22.2	38.7
MSC-1300-SO-1/2"NPT-SS	13mm	22.2	17.5	19.0	22.2	38.7
MSC-1400-SO-1/2"NPT-SS	14mm	25.4	17.5	19.0	22.2	38.7
MSC-1500-SO-1/2"NPT-SS	15mm	25.4	17.5	19.0	22.2	38.7



3/4" NPT	A	B	C	D	E	F
Product Code	To Suit	Nut A/F				
MSC-600-SO-3/4"NPT-SS	6mm	14.2	12.7	19.0	27.0	38.6
MSC-635-SO-3/4"NPT-SS	1/4"	14.2	12.7	19.0	27.0	38.6
MSC-800-SO-3/4"NPT-SS	8mm	15.8	13.5	19.0	27.0	39.8
MSC-1200-SO-3/4"NPT-SS	12mm	22.2	17.5	19.0	27.0	40.3
MSC-1270-SO-3/4"NPT-SS	1/2"	22.2	17.5	19.0	27.0	40.3
MSC-1500-SO-3/4"NPT-SS	15mm	25.4	17.5	19.0	27.0	40.3
MSC-2450-SO-3/4"NPT-SS	1"	38.1	20.5	19.0	27.0	42.2

1" NPT	A	B	C	D	E	F
Product Code	To Suit	Nut A/F				
MSC-600-SO-1"NPT-SS	6mm	14.2	12.7	23.5	34.9	42.0
MSC-635-SO-1"NPT-SS	1/4"	14.2	12.7	23.5	34.9	42.0
MSC-2450-SO-1"NPT-SS	1"	38.1	20.5	23.5	34.9	46.7

Sizes in mm and are correct at time of publication but subject to change.

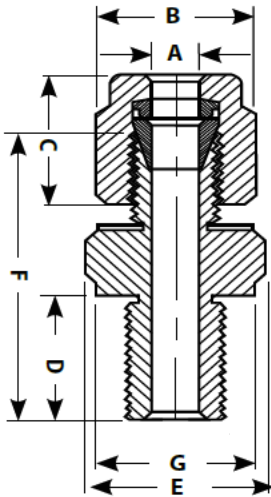
Thermal Detection Limited  
Unit 6, Primrose Hill Industrial Estate  
Orde Wingate Way  
Stockton-on-Tees, England,  
TS19 0GA



Fax : +44 (0) 1642 618307  
Tel : +44 (0) 1642 602878  
Email: [sales@thermal-detection.com](mailto:sales@thermal-detection.com)  
Web: [www.thermal-detection.com](http://www.thermal-detection.com) ©  
Thermal Detection Ltd 2016

### METRIC THREADS

M8	A	B	C	D	E	F	G
Product Code	To Suit	Nut A/F					
MSC-100-SO-M8-SS	1mm	7.9	8.0	7.5	14.2	22.0	13.6
MSC-150-SO-M8-SS	1.5mm	7.9	8.0	7.5	14.2	22.0	13.6
MSC-200-SO-M8-SS	2mm	7.9	8.0	7.5	14.2	21.0	13.6
MSC-320-SO-M8-SS	1/8"	11.1	12.0	7.5	14.2	23.3	13.6
MSC-300-SO-M8-SS	3mm	11.2	12.0	7.5	14.2	25.0	13.6
MSC-400-SO-M8-SS	4mm	12.7	12.0	7.5	14.2	25.0	13.6
MSC-450-SO-M8-SS	4.5mm	12.7	12.0	7.5	14.2	25.0	13.6



M10	A	B	C	D	E	F	G
Product Code	To Suit	Nut A/F					
MSC-300-SO-M10-SS	3mm	11.1	12.0	11.0	17.5	27.5	16.5
MSC-450-SO-M10-SS	4.5mm	12.7	12.0	11.0	17.5	28.0	16.5
MSC-600-SO-M10-SS	6mm	14.2	12.7	11.0	17.5	29.0	16.5

M12	A	B	C	D	E	F	G
Product Code	To Suit	Nut A/F					
MSC-320-SO-M12-SS	1/8"	11.1	12.0	11.0	17.5	27.2	16.3
MSC-550-SO-M12-SS	5.5mm	14.2	12.7	11.0	17.5	29.0	16.3
MSC-600-SO-M12-SS	6mm	14.2	12.7	11.0	17.5	29.0	16.3
MSC-800-SO-M12-SS	8mm	15.8	13.5	11.0	17.5	30.0	16.3

M14	A	B	C	D	E	F	G
Product Code	To Suit	Nut A/F					
MSC-300-SO-M14-SS	3mm	11.1	12.0	11.0	19.1	27.0	18.2
MSC-900-SO-M14-SS	9mm	17.5	14.2	11.0	19.1	30.0	18.2

M16	A	B	C	D	E	F	G
Product Code	To Suit	Nut A/F					
MSC-600-SO-M16-SS	6mm	14.2	12.7	11.0	22.2	28.5	21.4

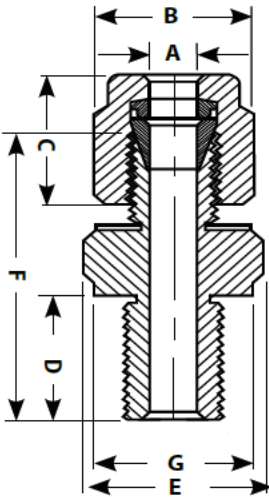
Sizes in mm and are correct at time of publication but subject to change.



### METRIC THREADS

M18	A	B	C	D	E	F	G
Product Code	To Suit	Nut A/F					
MSC-600-SO-M18-SS	6mm	14.2	12.7	11.0	22.2	28.5	21.4

M20	A	B	C	D	E	F	G
Product Code	To Suit	Nut A/F					
MSC-150-SO-M20-SS	1.5mm	7.9	13.0	11.2	25.4	28.0	24.5
MSC-300-SO-M20-SS	3mm	11.1	13.5	11.2	25.4	28.0	24.5
MSC-476-SO-M20-SS	3/16"	12.7	12.0	11.2	25.4	31.7	24.5
MSC-600-SO-M20-SS	6mm	14.2	12.7	11.2	25.4	32.7	24.5
MSC-800-SO-M20-SS	8mm	16.0	13.5	11.2	25.4	33.7	24.5



M22	A	B	C	D	E	F	G
Product Code	To Suit	Nut A/F					
MSC-950-SO-M22-SS	3/8"	17.5	14.2	13.0	28.5	35.5	27.0

M24	A	B	C	D	E	F	G
Product Code	To Suit	Nut A/F					
MSC-800-SO-M24-SS	8mm	16.0	13.5	16.0	30.0	40.5	29.0

Sizes in mm and are correct at time of publication but subject to change.