

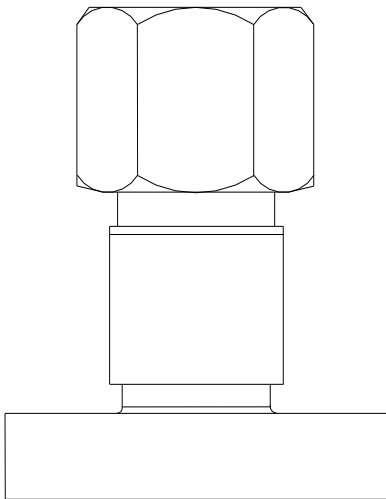
**Product Code:
CPF-FA1**

Description:

The CPF series offers a simple tried and tested alternative to the standard method of sealing load/chamber probes on Steris Finn-Aqua autoclaves. The mounting flange of the entry gland replaces the existing standard mounting plate and 'O' rings, but utilises the existing M6 mounting holes and Allen head set screw arrangement.

Sealing is provided by a Teflon® sealant. When applying torque to the cap nut it forces the follower to move in a longitudinal direction compressing the Teflon® sealant against the seat which is in turn prevented from moving by an internal step. This action causes the Teflon® sealant to deform and close down on the probe cable and expand into the bore of the gland body producing a pressure/vacuum barrier.

Applications: Steris Finn-Aqua autoclaves.

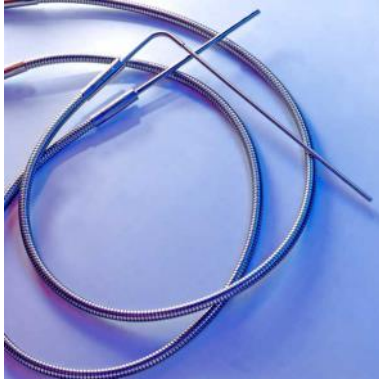


Specification:

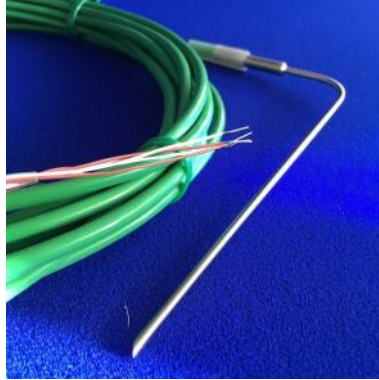
ENTRY GLAND BODY	Consisting of MHM series body (see data sheet 105) and in 316L stainless steel.
ENTRY GLAND SEAT	316/316L stainless steel.
FOLLOWER AND CAP NUT	303 stainless steel (non wetted components).
SEALANT	Teflon®.
NUMBER OF PROBES	Up to six, each with a cable diameter of 4.6mm to suit SL150/SL160 probes (entry gland blanks are available if future usage dictates the use of less than the maximum).
MOUNTING FLANGE	70mm OD x 15mm high and in 316L stainless steel.
OPERATING RANGE	-80 to +150°C and from vacuum to 10 bar.

Datasheet : 024

Temperature Accessories:



Steriprobe Autoclave Load Probe



SL160 Angled Autoclave Probe



SL150 Autoclave Probe



Thermocouple Entry Gland TCEG



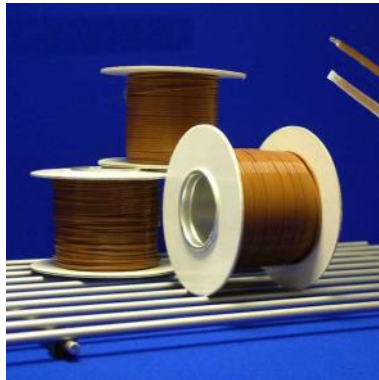
Y Piece Extension



Tee Piece Extension



Clamps, Tri-clover Blanks,
Gaskets



Type T Thermocouple Wire



Ampoule Holders

Datasheet : 024