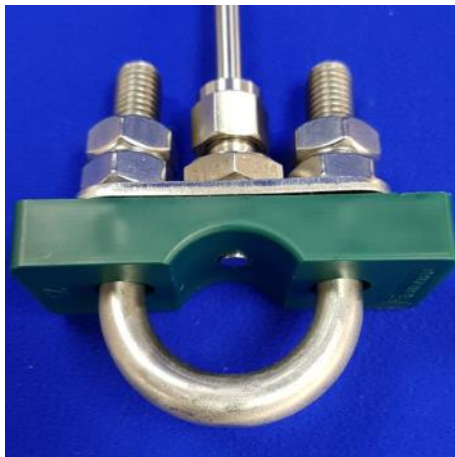
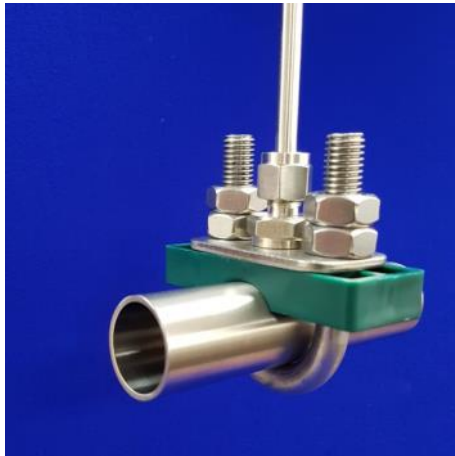


Pipe Surface Measurement for Pipes and Distribution Lines.

- Temperature probe incorporating a U bolt pipe clamp.
- Sensor tip in contact with the outer surface of the pipe for non-invasive measurement.
- Simple to assemble and disassemble



Specification:

MATERIAL	Bolt: Stainless steel Clamp: Polypropylene -20 to 83°C Polyimide -50 to 200°C
CLAMP SIZES	To suit common Imperial and Metric tube sizes
RTD OPTION	
DETECTOR	Single or duplex with 2,3 or 4 wire connection, Class B, A, AA or fractional DIN tolerance and to BS EN 60751:2008.
OPERATING RANGE	-50 to +200°C
THERMOCOUPLE OPTION	
ELEMENT	Single or duplex element, type T, K or J in Class 1 material to BS EN 60584-1:2013
OPERATING RANGE	-50 to +200°C
OPTIONAL EXTRAS	
Probe termination options: <ul style="list-style-type: none"> • Plain probe with flying lead (PFA jacket), any length • Terminal Head in 316 st st, die cast aluminium or polypropylene • Quick connect for removable leads 	
Temperature transmitter for 4-20mA output	

Datasheet : 013